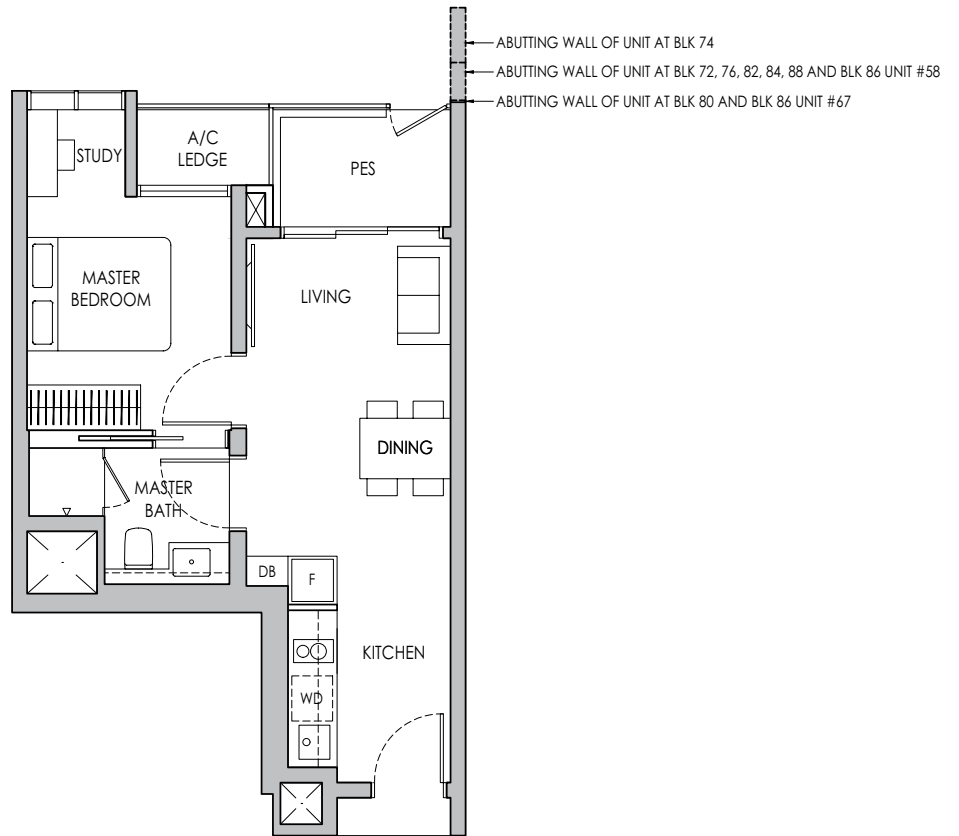


# 1-BEDROOM + STUDY

## Type A1S(p)

44 sq m / 474 sq ft

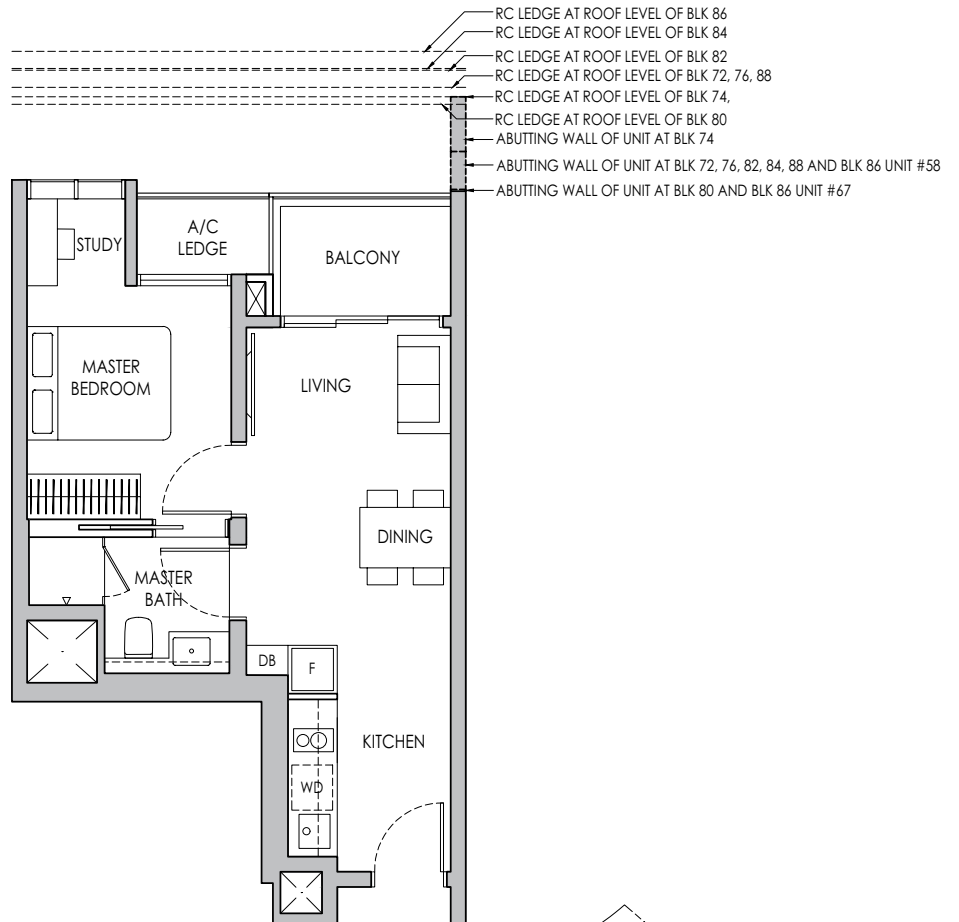
- BLK 72 #04-08\*
- BLK 74 #04-09 / #04-16\*
- BLK 76 #04-17
- BLK 80 #04-40\*
- BLK 82 #04-48\*
- BLK 84 #04-56\*
- BLK 86 #04-58 / #04-67\*
- BLK 88 #04-75\*



## Type A1S

44 sq m / 474 sq ft

- BLK 72 #05-08\* - # 11-08\*
- BLK 74 #05-09 - #11-09 / #05-16\* - #11-16\*
- BLK 76 #05-17 - #12-17
- BLK 80 #05-40\* - #13-40\*
- BLK 82 #05-48\* - #13-48\*
- BLK 84 #05-56\* - #13-56\*
- BLK 86 #05-58 - #13-58 / #05-67\* - #13-67\*
- BLK 88 #05-75\* - #11-75\*



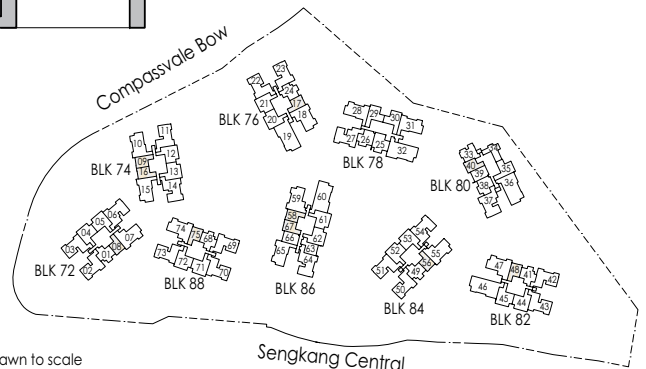
\* Mirror Image



Area includes air-con (A/C) ledge, private enclosed space (PES), balcony and strata void area where applicable. Some units are mirror images of the apartment plans shown in the brochure. Please refer to the keyplan for orientation. The plans are subject to change as may be approved by relevant authorities. All floor plans are approximate measurements only and are subject to government re-survey. The balcony shall not be enclosed unless with the approved balcony screen. For an illustration of the approved balcony screen, please refer to the diagram annexed hereto as "Annexure A".



Keyplan is not drawn to scale

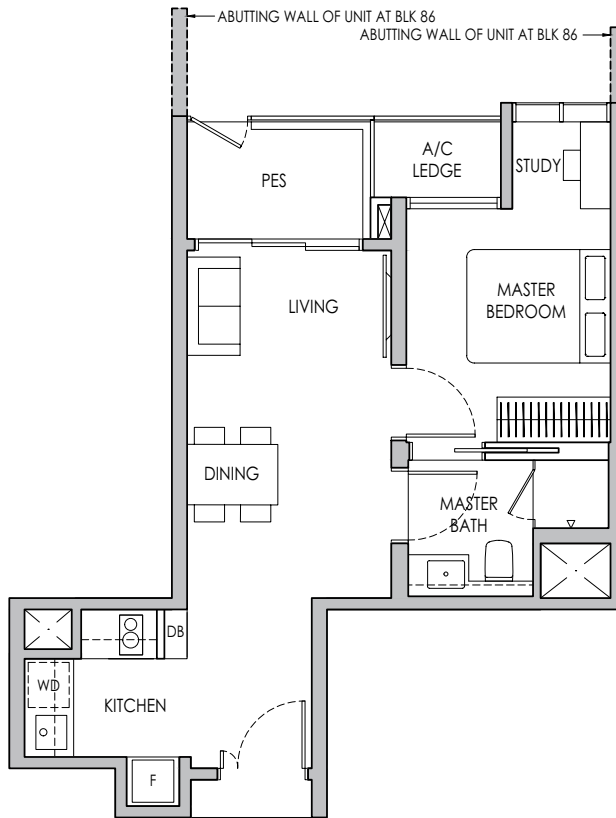


# 1-BEDROOM + STUDY

## Type A2S(p)

46 sq m / 495 sq ft

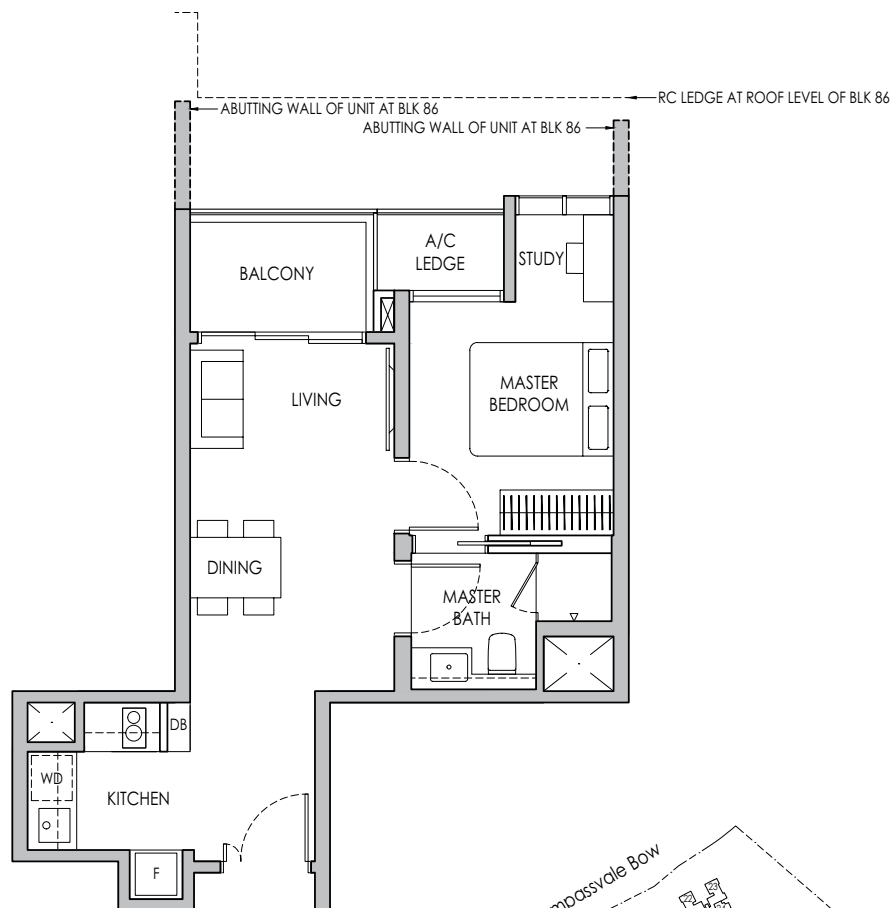
BLK 86: #04-63



## Type A2S

46 sq m / 495 sq ft

BLK 86: #05-63 - #13-63



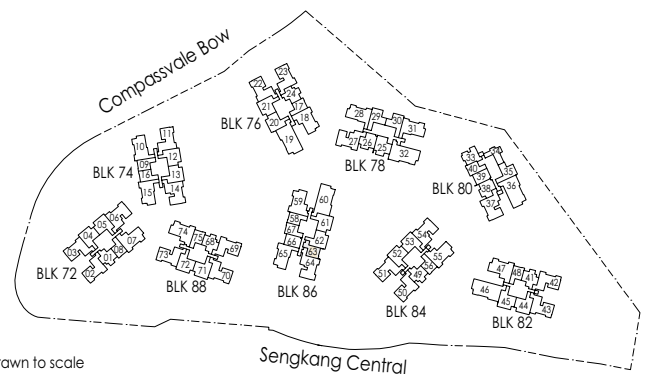
\* Mirror Image



Area includes air-con (A/C) ledge, private enclosed space (PES), balcony and strata void area where applicable. Some units are mirror images of the apartment plans shown in the brochure. Please refer to the keyplan for orientation. The plans are subject to change as may be approved by relevant authorities. All floor plans are approximate measurements only and are subject to government re-survey. The balcony shall not be enclosed unless with the approved balcony screen. For an illustration of the approved balcony screen, please refer to the diagram annexed hereto as "Annexure A".



Keyplan is not drawn to scale



Sengkang Central

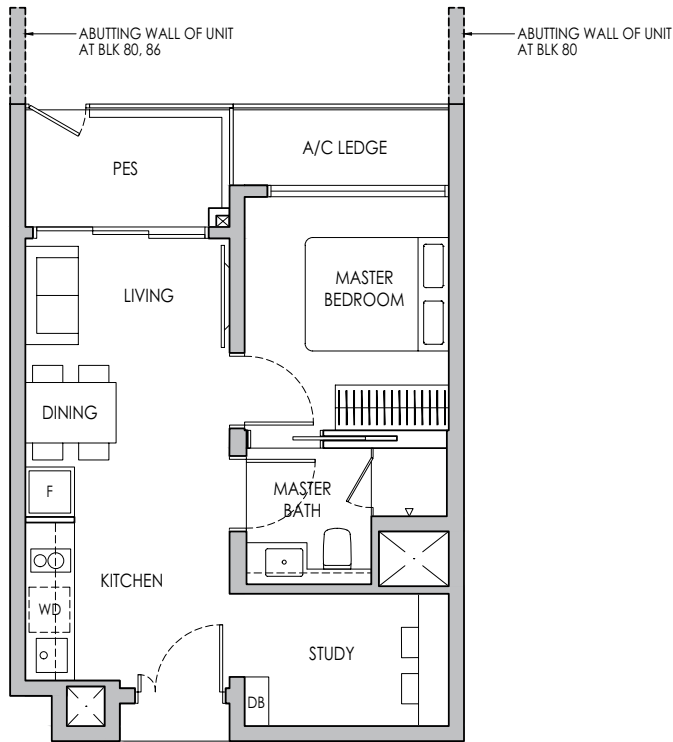
# 1-BEDROOM + STUDY

## Type A3S(p)

47 sq m / 506 sq ft

BLK 80 #04-39

BLK 86 #04-66\*

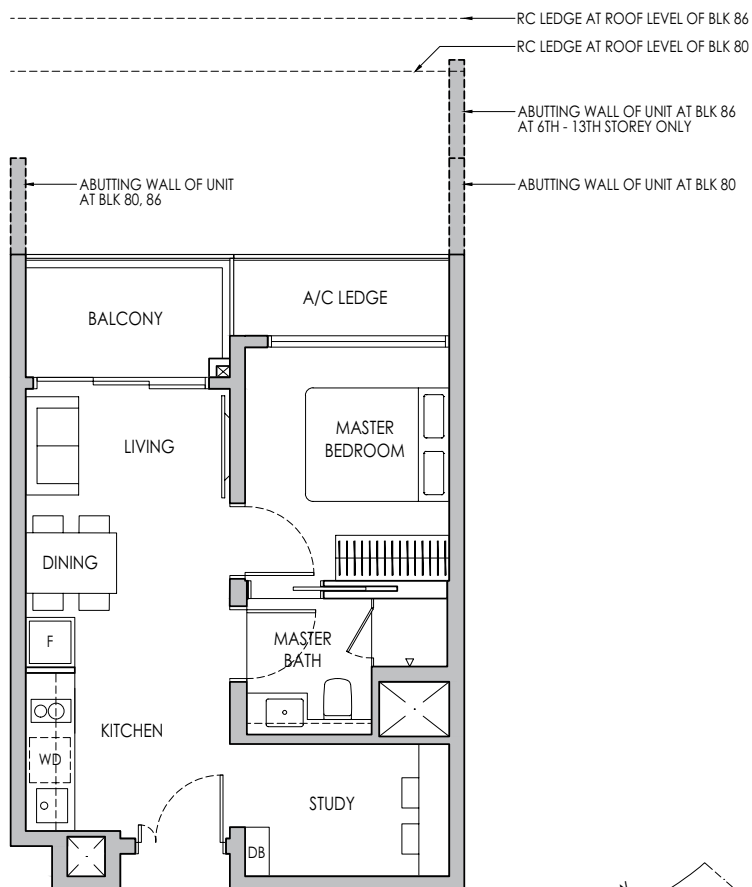


## Type A3S

47 sq m / 506 sq ft

BLK 80 #05-39 - #13-39

BLK 86 #05-66\* - #13-66\*



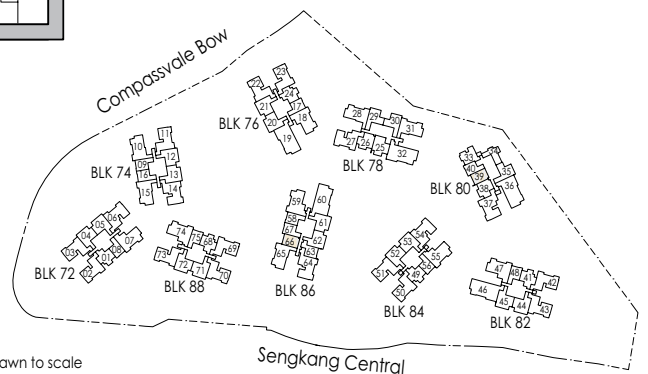
\* Mirror Image



Area includes air-con (A/C) ledge, private enclosed space (PES), balcony and strata void area where applicable. Some units are mirror images of the apartment plans shown in the brochure. Please refer to the keyplan for orientation. The plans are subject to change as may be approved by relevant authorities. All floor plans are approximate measurements only and are subject to government re-survey. The balcony shall not be enclosed unless with the approved balcony screen. For an illustration of the approved balcony screen, please refer to the diagram annexed hereto as "Annexure A".



Keyplan is not drawn to scale

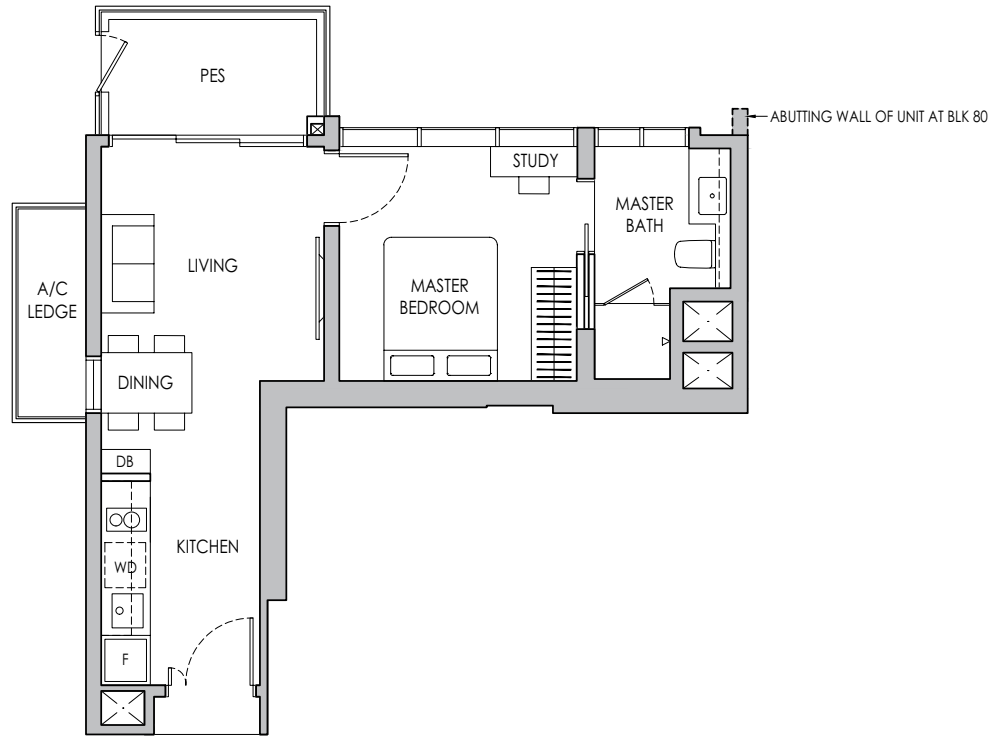


# 1-BEDROOM + STUDY

Type A4S(p)

47 sq m / 506 sq ft

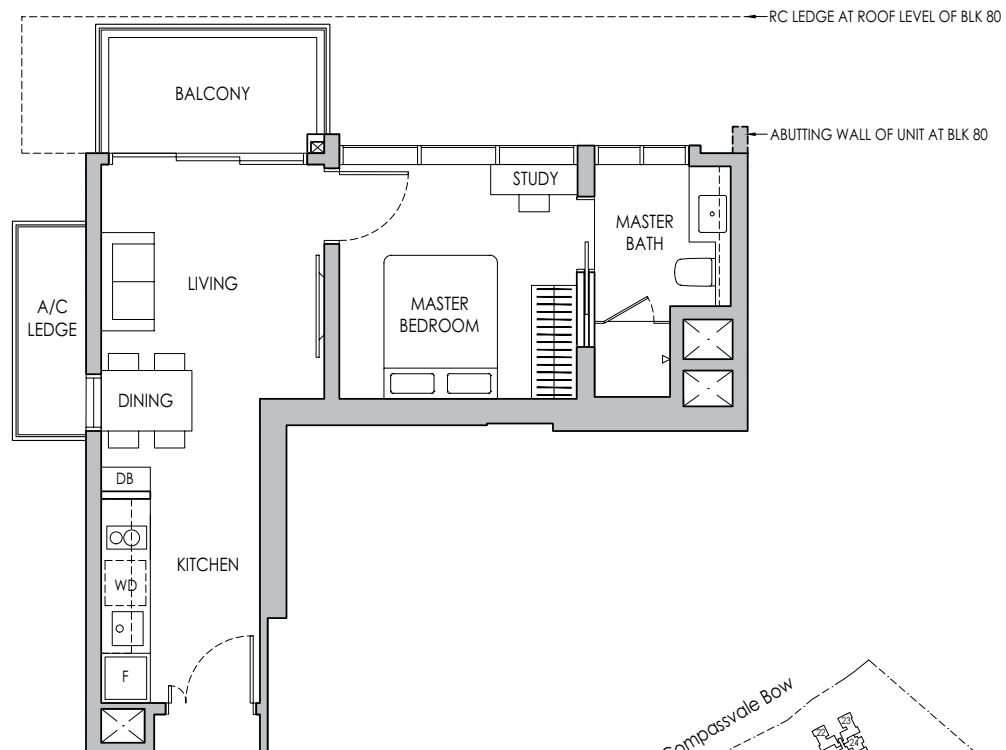
BLK 80 #04-34



Type A4S

47 sq m / 506 sq ft

BLK 80 #05-34 - #13-34



\* Mirror Image



Area includes air-con (A/C) ledge, private enclosed space (PES), balcony and strata void area where applicable. Some units are mirror images of the apartment plans shown in the brochure. Please refer to the keyplan for orientation. The plans are subject to change as may be approved by relevant authorities. All floor plans are approximate measurements only and are subject to government re-survey. The balcony shall not be enclosed unless with the approved balcony screen. For an illustration of the approved balcony screen, please refer to the diagram annexed hereto as "Annexure A".



Keyplan is not drawn to scale

