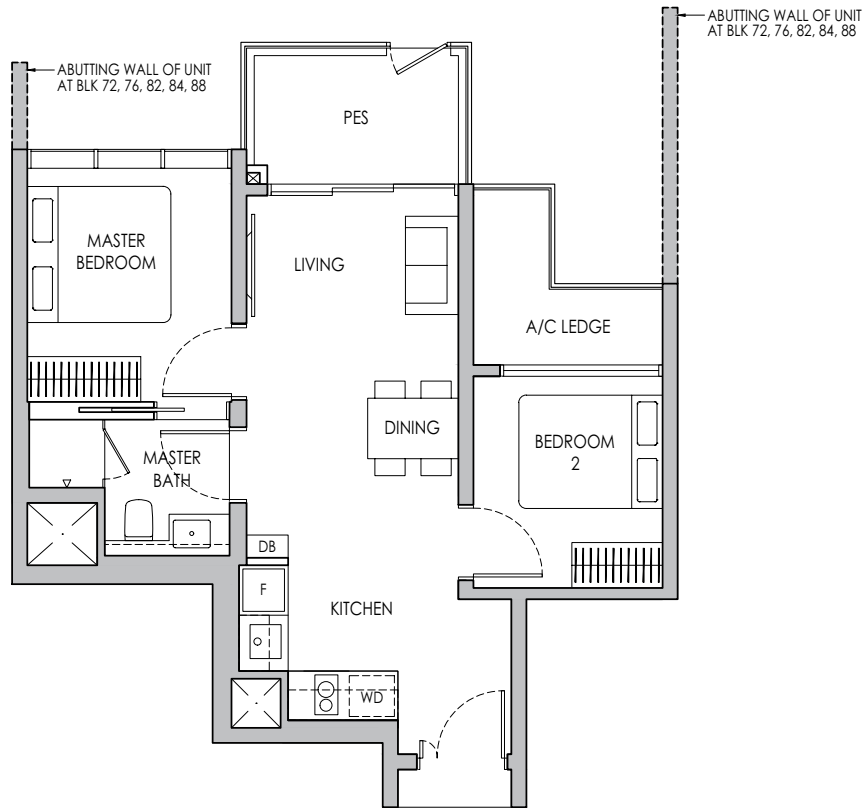


# 2-BEDROOM

## Type B1(p)

58 sq m / 624 sq ft

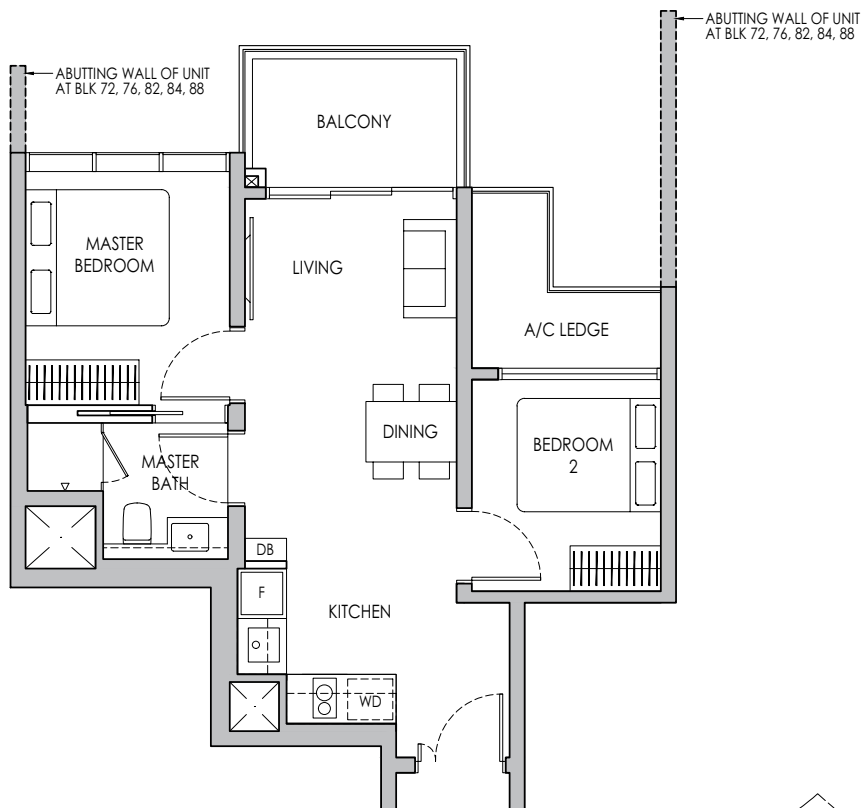
- BLK 72 #04-01
- BLK 76 #04-24\*
- BLK 82 #04-41
- BLK 84 #04-49
- BLK 88 #04-68



## Type B1

58 sq m / 624 sq ft

- BLK 72 #05-01 - #11-01
- BLK 76 #05-24\* - #12-24\*
- BLK 82 #05-41 - #13-41
- BLK 84 #05-49 - #13-49
- BLK 88 #05-68 - #11-68



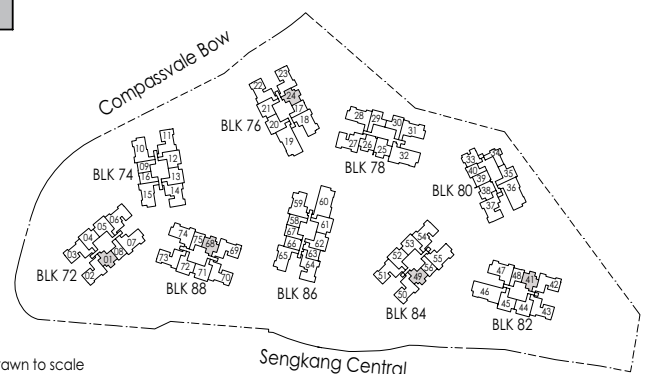
\* Mirror Image



Area includes air-con (A/C) ledge, private enclosed space (PES), balcony and strata void area where applicable. Some units are mirror images of the apartment plans shown in the brochure. Please refer to the keyplan for orientation. The plans are subject to change as may be approved by relevant authorities. All floor plans are approximate measurements only and are subject to government re-survey. The balcony shall not be enclosed unless with the approved balcony screen. For an illustration of the approved balcony screen, please refer to the diagram annexed hereto as "Annexure A".



Keyplan is not drawn to scale



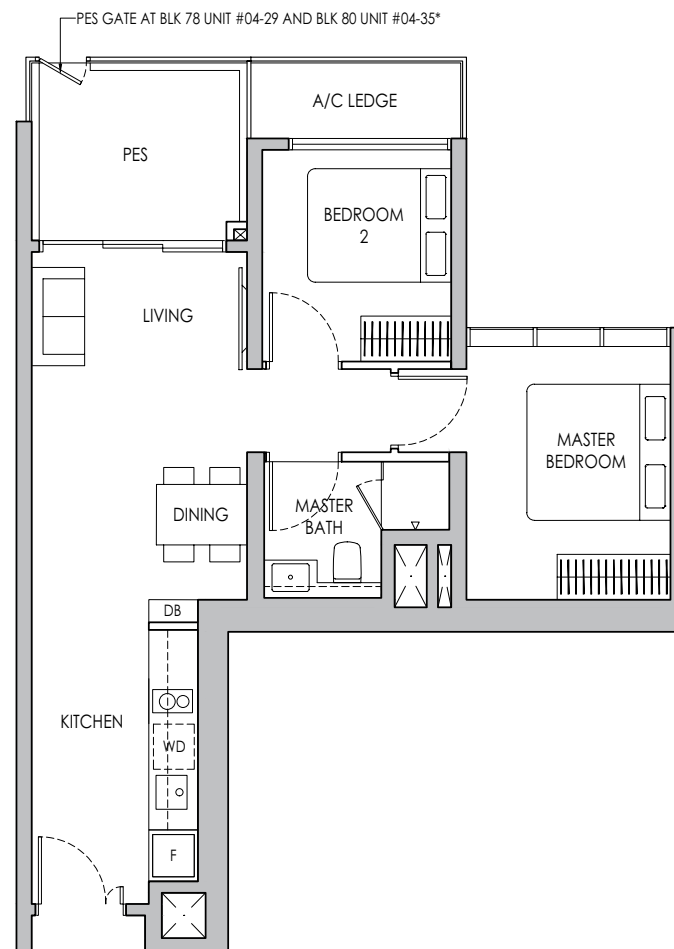
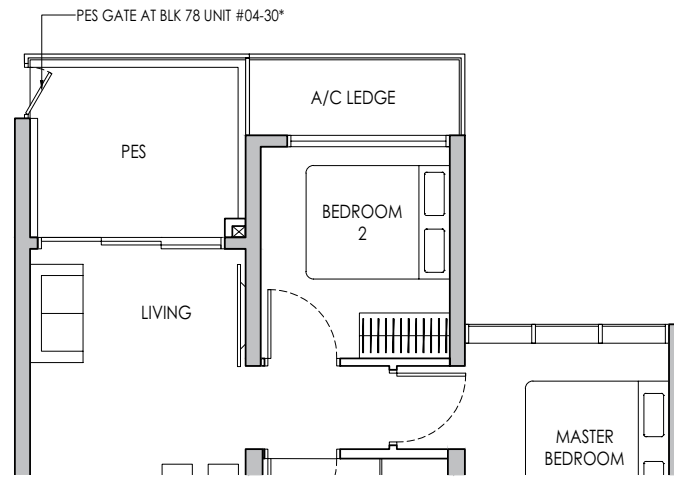
# 2-BEDROOM

## Type B2(p)

63 sq m / 678 sq ft

BLK 78 #04-29 / #04-30\*

BLK 80 #04-35\*



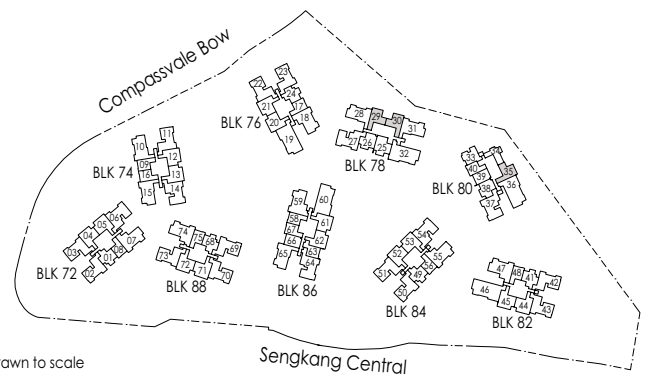
\* Mirror Image



Area includes air-con (A/C) ledge, private enclosed space (PES), balcony and strata void area where applicable. Some units are mirror images of the apartment plans shown in the brochure. Please refer to the keyplan for orientation. The plans are subject to change as may be approved by relevant authorities. All floor plans are approximate measurements only and are subject to government re-survey. The balcony shall not be enclosed unless with the approved balcony screen. For an illustration of the approved balcony screen, please refer to the diagram annexed hereto as "Annexure A".



Keyplan is not drawn to scale



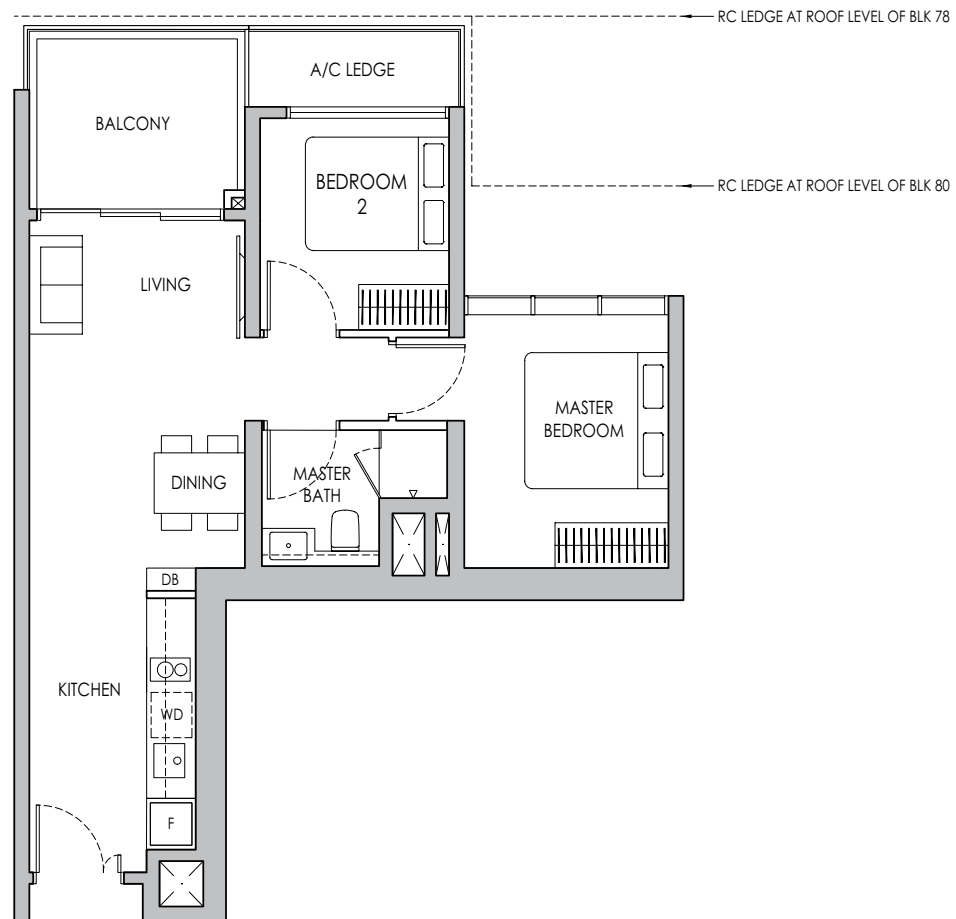
# 2-BEDROOM

## Type B2

63 sq m / 678 sq ft

BLK 78 #05-29 - #13-29, #05-30\* - #13-30\*

BLK 80 #05-35\* - #13-35\*



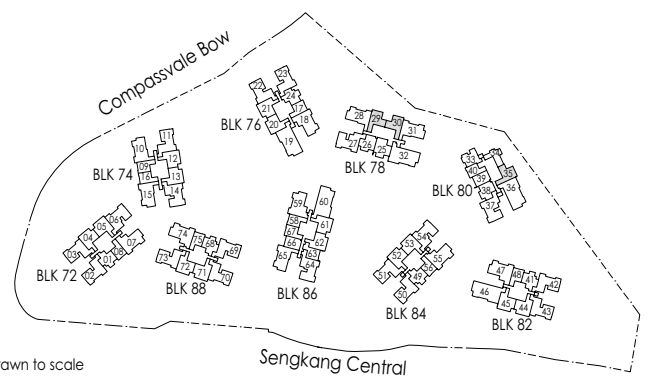
\* Mirror Image



Area includes air-con (A/C) ledge, private enclosed space (PES), balcony and strata void area where applicable. Some units are mirror images of the apartment plans shown in the brochure. Please refer to the keyplan for orientation. The plans are subject to change as may be approved by relevant authorities. All floor plans are approximate measurements only and are subject to government re-survey. The balcony shall not be enclosed unless with the approved balcony screen. For an illustration of the approved balcony screen, please refer to the diagram annexed hereto as "Annexure A".



Keyplan is not drawn to scale



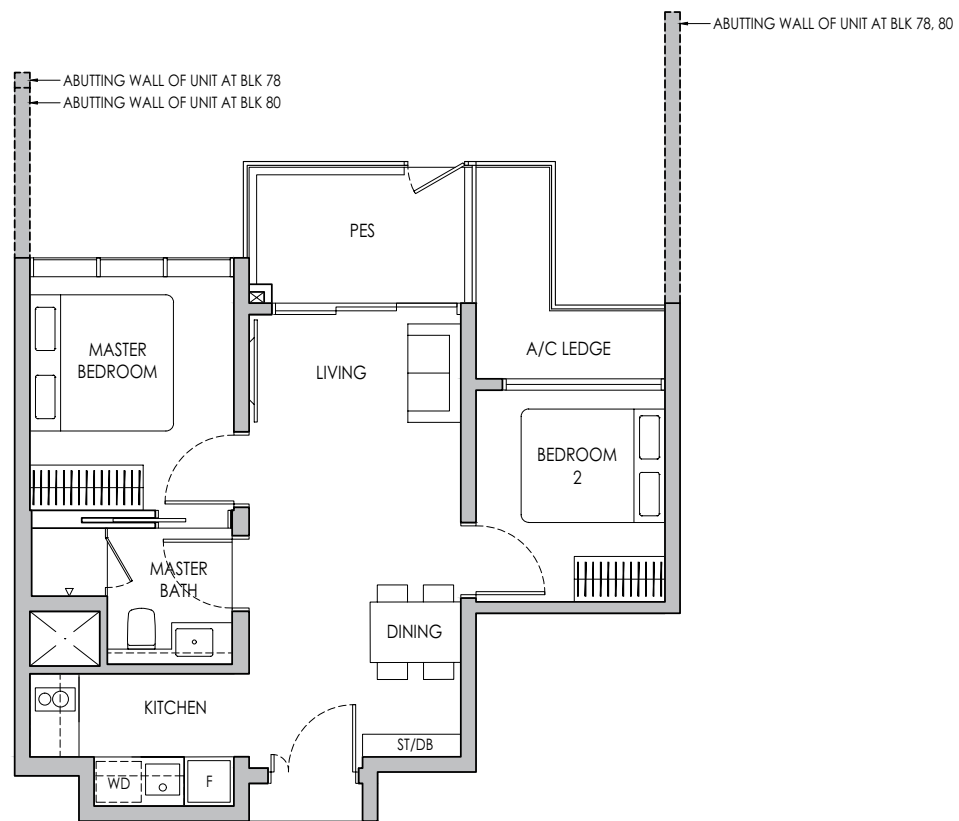
# 2-BEDROOM

## Type B3(p)

58 sq m / 624 sq ft

BLK 78 #04-26

BLK 80 #04-38\*

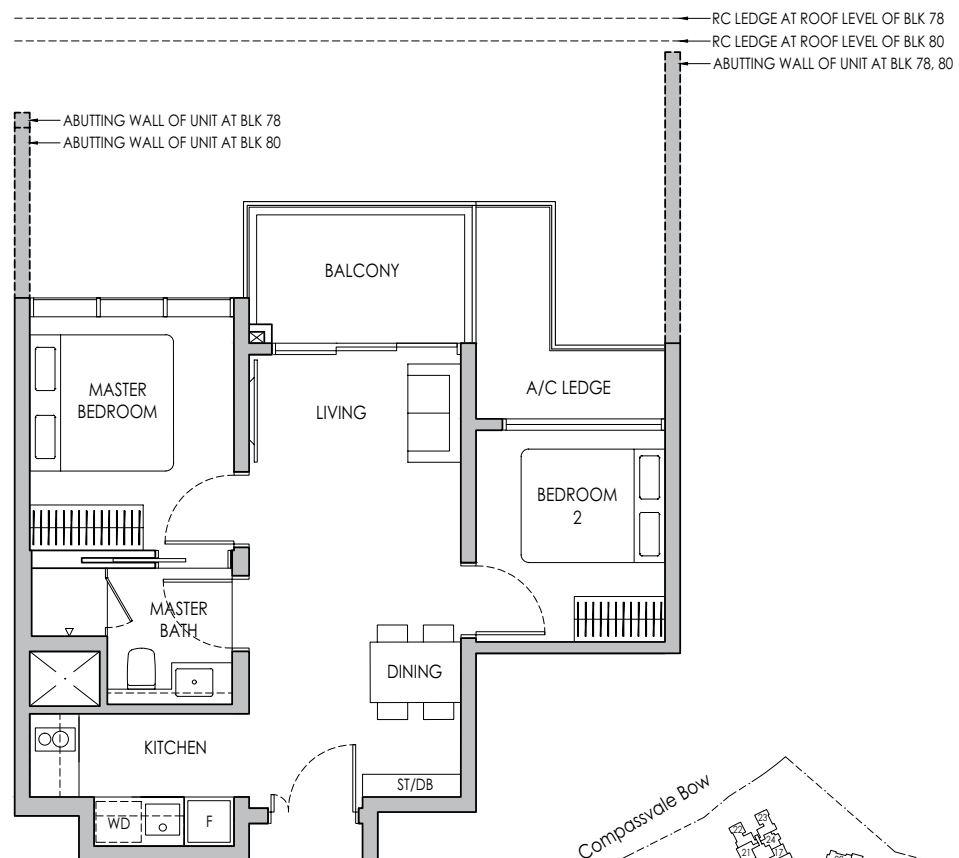


## Type B3

58 sq m / 624 sq ft

BLK 78 #05-26 - #13-26

BLK 80 #05-38\* - #13-38\*



\* Mirror Image



Area includes air-con (A/C) ledge, private enclosed space (PES), balcony and strata void area where applicable. Some units are mirror images of the apartment plans shown in the brochure. Please refer to the keyplan for orientation. The plans are subject to change as may be approved by relevant authorities. All floor plans are approximate measurements only and are subject to government re-survey. The balcony shall not be enclosed unless with the approved balcony screen. For an illustration of the approved balcony screen, please refer to the diagram annexed hereto as "Annexure A".



Keyplan is not drawn to scale

